

# For Lease

1781 Jamestown Road Suite 250  
Williamsburg, Virginia 23185



**For Additional Information Please Contact**



**Vince Campana**

1313 Jamestown Road Suite 201

Williamsburg, Virginia 23185

[www.CWCREW.net](http://www.CWCREW.net)

**757.209.2990**

# For Lease

**Location:** 1781 Jamestown Road Williamsburg Suite 250, Virginia 23185

**Description:** This offering consists of a 1,200 square office suite located in Williamsburg, Virginia. The suite has recently been renovated with new floor coverings, paint, and bathroom upgrades. There are four executive offices – each with oversized windows for natural light and vistas. There are two bathrooms and a center bullpen area connecting all the rooms. Please note that this space is located on the second floor and is accessible by stairway access only.

**Land Size:** 1.294 Acres

**Rental Rate:** Suite 250 \$14.00sq.ft. NNN

**Parking:** Approximately 50 paved parking spaces surrounding the center.

**Co-Tenancy:** Duke Communications  
Johnstown Jewelers  
Salon 109  
Serenity Day Spa  
Big Boss Solar  
Allison Niccole Creatives Photography



**Vincent Campana**  
1313 Jamestown Road Suite 201  
Williamsburg, Va 23185  
[www.CWCREW.net](http://www.CWCREW.net)

**757.209.2990**

*This information was obtained from sources deemed to be reliable, but is not warranted.  
This offer subject to errors and omissions, or withdrawal, without notice.*

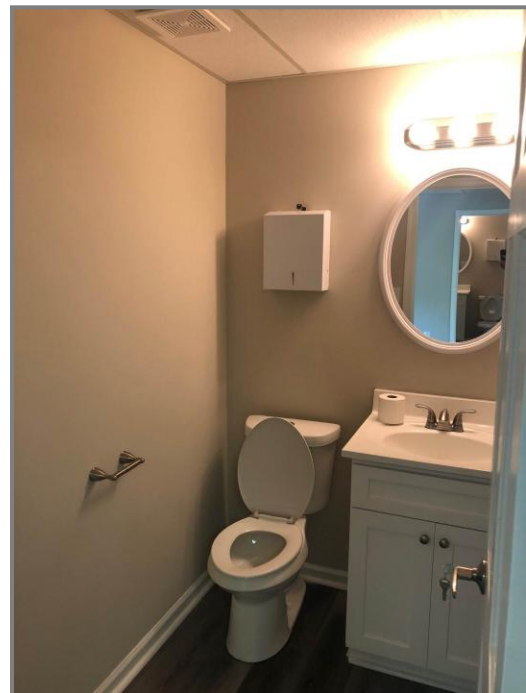
# Photographs



*This information was obtained from sources deemed to be reliable, but is not warranted.  
This offer subject to errors and omissions, or withdrawal, without notice.*

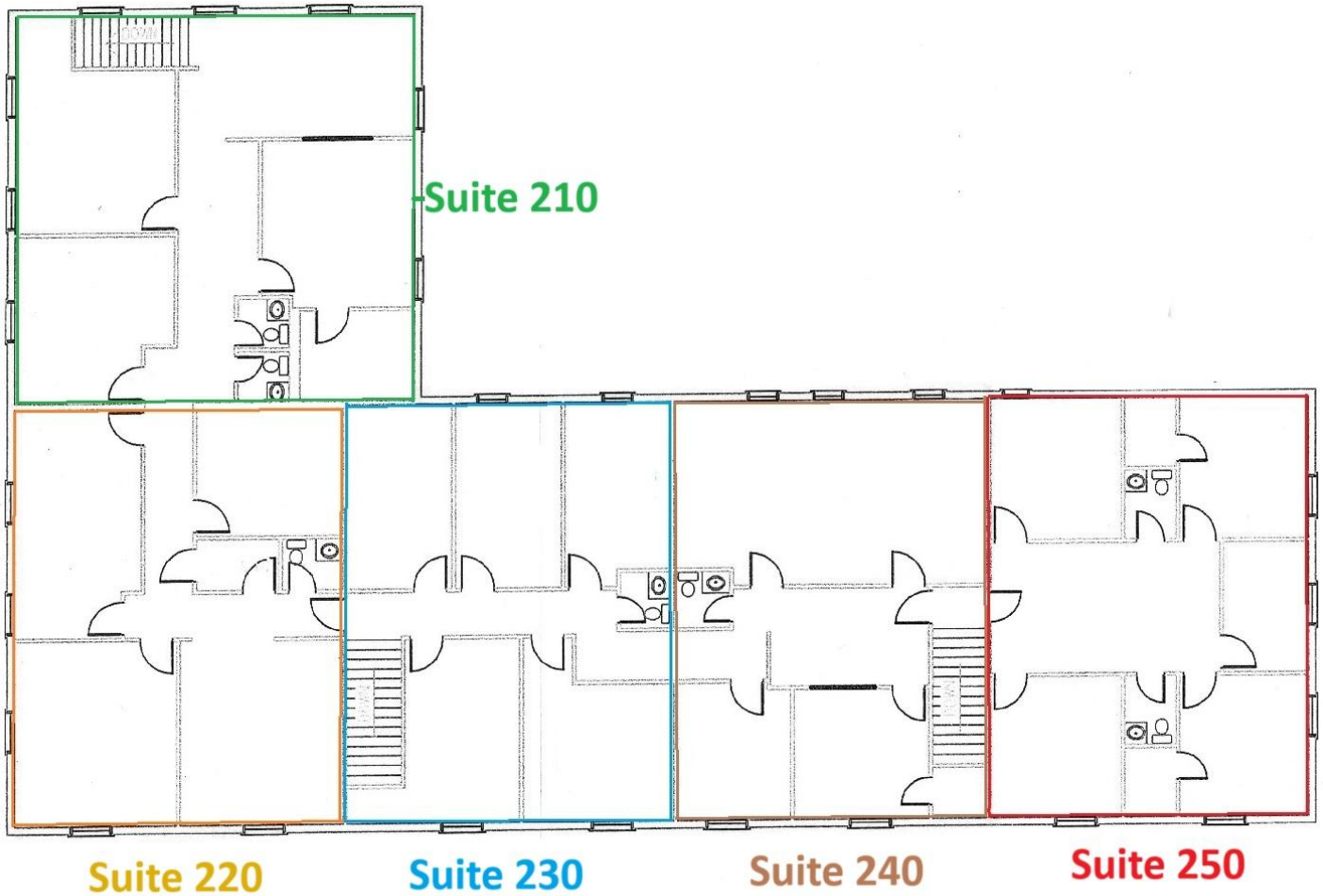


# Photographs



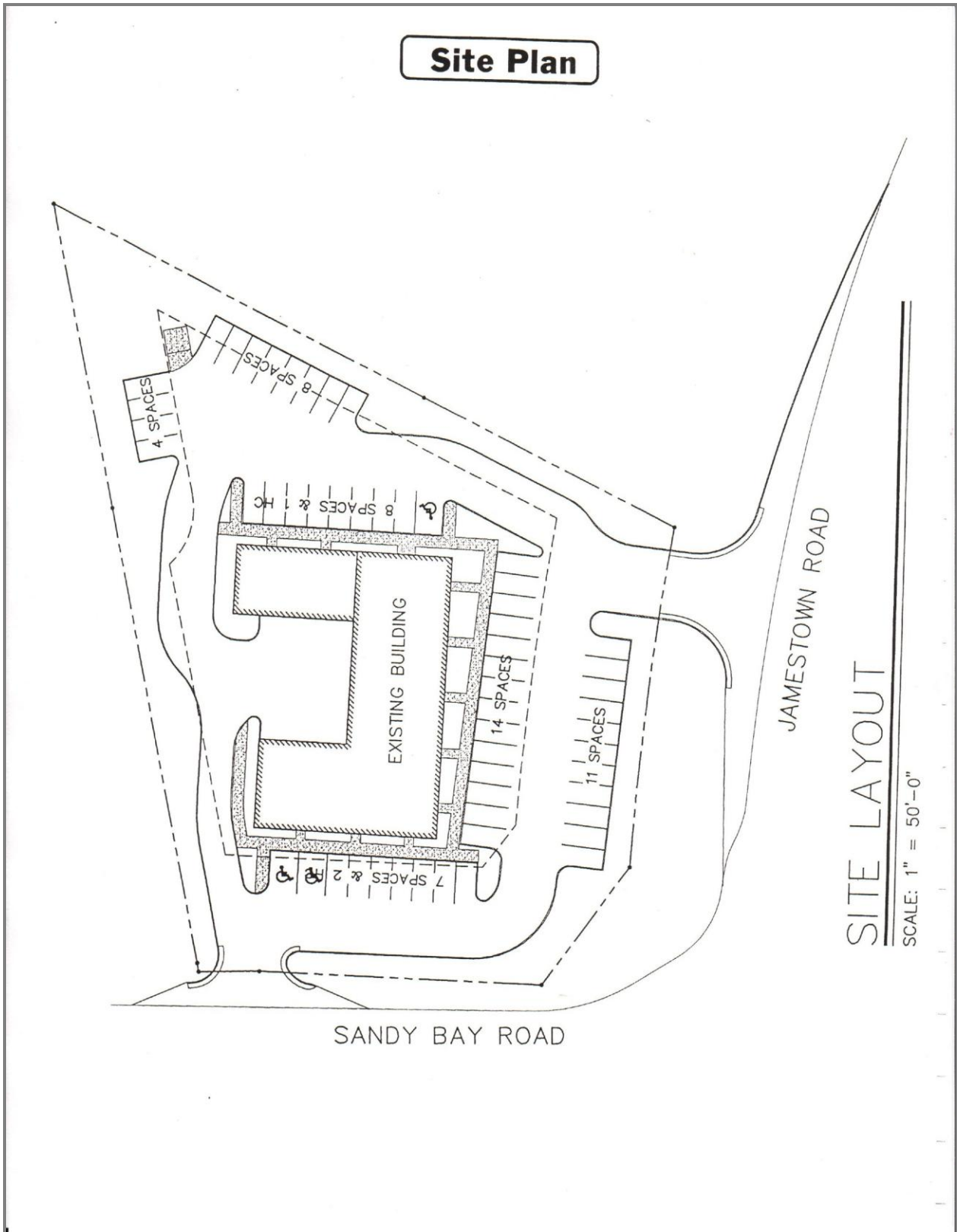
*This information was obtained from sources deemed to be reliable, but is not warranted.  
This offer subject to errors and omissions, or withdrawal, without notice.*

# Building Dimensions



Suite 250 is outlined in RED in the above image.

# Site Plan



*This information was obtained from sources deemed to be reliable, but is not warranted.  
This offer subject to errors and omissions, or withdrawal, without notice.*

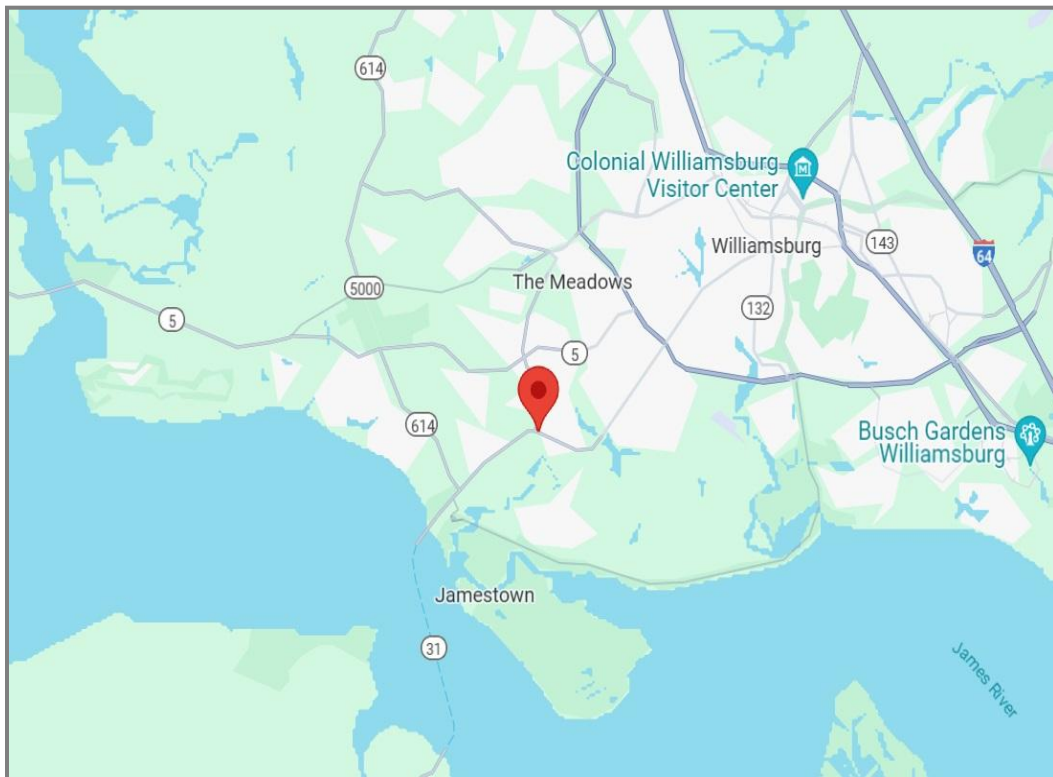
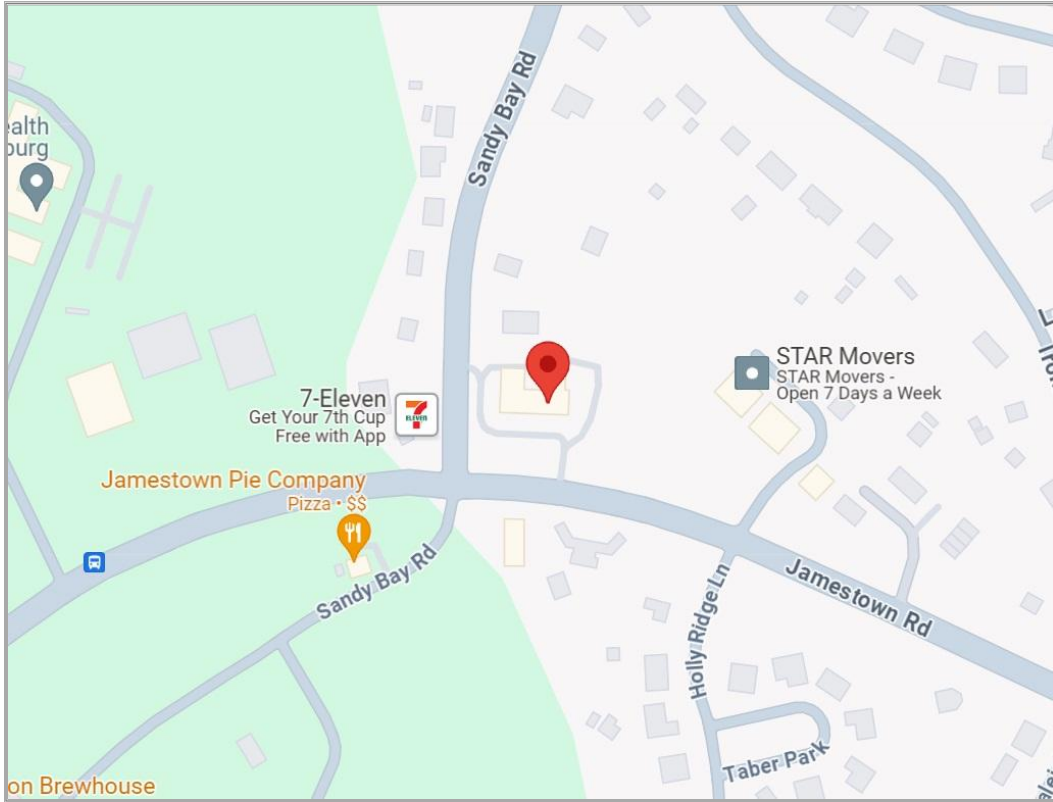


# Aerial



*This information was obtained from sources deemed to be reliable, but is not warranted.  
This offer subject to errors and omissions, or withdrawal, without notice.*

# Maps



*This information was obtained from sources deemed to be reliable, but is not warranted.  
This offer subject to errors and omissions, or withdrawal, without notice.*