

For Lease

1315 Jamestown Road Suite 102 & 103
Williamsburg, Virginia 23185



For Additional Information Please Contact



Vince Campana

1313 Jamestown Road Suite 201
Williamsburg, Virginia 23185
www.CampanaWaltz.com

757.209.2990

For Lease

1315 Jamestown Road Suite 102 & 103
Williamsburg, Virginia 23185

Location: 1315 Jamestown Road Suite 102 & 103 Williamsburg, Virginia 23185

Description: This offering consists of two office suites that are currently conjoined creating approximately 2,304 square feet of leasable space. The property is located in the beautiful Williamsburg Office Park and along side many other professional businesses. In it's current configuration the space has seven individual offices, a break room/kitchenette, two private bathrooms, a reception area, and two private entrances.

Additionally, the space could be subdivided into two separate office suites with each being approximately 1,152 square feet.

Suite Sizes: Suite 102 – 1,152sq.ft.
Suite 103 – 1,152sq.ft.

Parking: Parking is shared with the other office condominiums in the park with ADA accessibility.

Lease Rate: \$3,000.00/month – Tenant pays for utilities. OR
\$1,650.00/month, per condominium. Tenant pays for utilities.
Condominium Fees are paid by the Landlord!

Availability: February 1, 2024

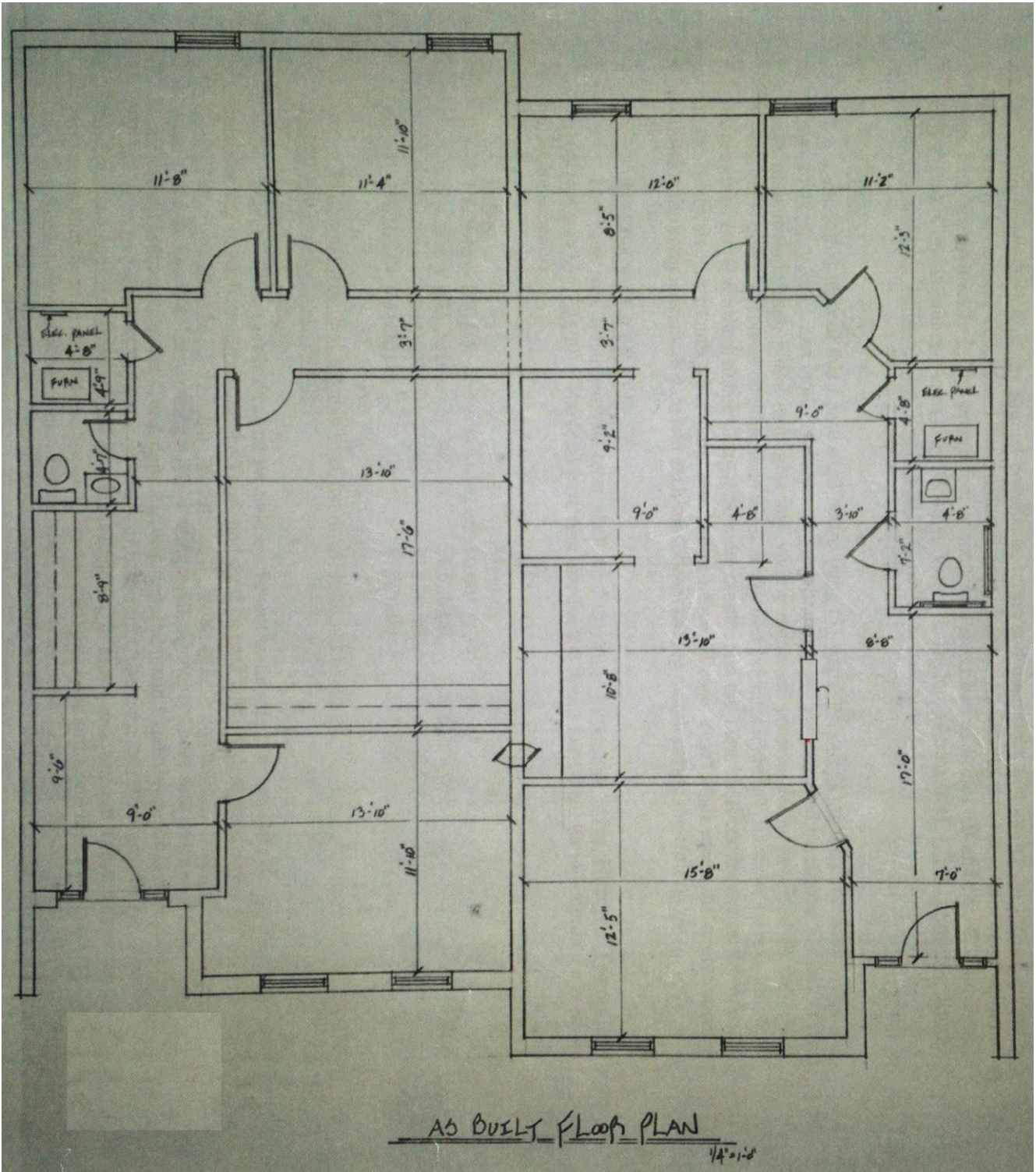


Vince Campana
1313 Jamestown Road Suite 201
Williamsburg, Virginia 23185
www.CampanaWaltz.com

757.209.2990

This information was obtained from sources deemed to be reliable, but is not warranted.
This offer subject to errors and omissions, or withdrawal, without notice.

Building Dimensions



*This information was obtained from sources deemed to be reliable, but is not warranted.
This offer subject to errors and omissions, or withdrawal, without notice.*

Permitted Uses

Use Category	Use List	Permitted Uses	Specially Permitted Uses
Residential	An apartment or living quarters for a guard, caretaker, proprietor or the person employed on the premises, which is clearly secondary to the commercial use of the property	P	
Commercial	Accessory uses and structures, as defined in section 24-2	P	
	Adult day care centers	P	
	Amphitheaters		SUP
	Antique shops	P	
	Arts and crafts, hobby and handicraft shops	P	
	Auction houses	P	
	Bakeries or fish markets	P	
	Banks and other financial institutions	P	
	Barber and beauty salons	P	
	Beekeeping in accordance with section 24-47.1	P	
	Business and professional offices	P	
	Campgrounds		SUP
	Catering and meal preparation	P	
	Child day care centers	P	
	Contractor offices (with storage of materials and equipment limited to a fully enclosed building)	P	
	Convenience stores which sell and dispense fuel in accordance with section 24-38		SUP
	Convention centers		SUP
	Country clubs and golf courses, public or private		SUP
	Drug stores	P	
	Dry cleaners and laundries	P	
	Farmer's market	P	
	Feed, seed and farm supply stores	P	
	Firearms sales and service	P	
	Firing and shooting ranges, limited to a fully enclosed building		SUP
	Flea markets		SUP
	Funeral homes	P	
	Gift and souvenir stores	P	
	Grocery stores	P	
	Health and exercise clubs, fitness centers	P	
	Heliports and helistops, as an accessory use		SUP
	Hospitals		SUP
	Hotels and motels	P	
	Indoor centers of amusement including billiard halls, arcades, pool rooms, bowling alleys, dance clubs and bingo halls	P	
	Indoor sport facilities (excluding firing and shooting ranges)	P	
	Indoor theaters	P	
	Janitorial service establishments	P	
	Kennels and animal boarding facilities	P	
	Limousine services (with maintenance limited to a fully enclosed building)	P	
	Lodges, civic clubs, fraternal organizations and service clubs	P	
	Lumber and building supply (with storage limited to a fully enclosed building or screened from view with landscaping and fencing with a maximum height of 12 feet)	P	
	Machinery sales and service (with storage and repair limited to a fully enclosed building)	P	
	Marinas, docks, piers, yacht clubs, boat basins, boat storage and servicing, repair and sale facilities for the same; if fuel is sold, then in accordance with section 24-38	P	

*This information was obtained from sources deemed to be reliable, but is not warranted.
This offer subject to errors and omissions, or withdrawal, without notice.*

Permitted Uses

Use Category	Use List	Permitted Uses	Specially Permitted Uses
	Marine or waterfront businesses to include the receipt, storage and transshipment of waterborne commerce or seafood receiving, packaging or distribution	P	
	Medical clinics or offices	P	
	Mobile food vending vehicles in accordance with Section 24-49	P	
	Museums	P	
	New and/or rebuilt automotive parts sales (with storage limited to a fully enclosed building)	P	
	Nursing homes		SUP
	Off-street parking as required by article II, division 2 of this chapter	P	
	Office supply stores	P	
	Outdoor centers of amusement, including miniature golf, bumper boats and waterslide parks		SUP
	Outdoor sports facilities, including golf driving ranges, batting cages and skate parks		SUP
	Parking lots, structures or garages	P	
	Pet stores and pet supply sales	P	
	Photography, artist and sculptor stores and studios	P	
	Plumbing and electrical supply and sales (with storage limited to a fully enclosed building)	P	
	Printing, mailing, lithographing, engraving, photocopying, blueprinting and publishing establishments	P	
	Radio and television stations and accessory antenna or towers which are 60 feet or less in height	P	
	Research, development and design facilities or laboratories	P	
	Restaurants, including fast food restaurants, tea rooms, coffee shops, and taverns	P	
	Retail and service stores, including the following stores: alcohol, appliances, books, cabinets, cameras, candy, carpet, coin, department, dressmaking, electronics, florist, furniture, furrier, garden supply, gift, gourmet foods, greeting cards, handicrafts, hardware, home appliance, health and beauty aids, ice cream, jewelry, locksmith, music, office supply, optical goods, paint, pet, photography, picture framing, plant supply, secretarial services, shoes, sporting goods, stamps, tailor, tobacco and pipes, toys, travel agencies, upholstery, variety, wearing apparel, and yard goods	P	
	Retail food stores	P	
	Security service offices	P	
	Small-scale alcohol production	P	
	Taxi service	P	
	Theme parks greater than 10 acres in size		SUP
	Tourist homes	P	
	Vehicle repair and service, including tire, transmission, glass, body and fender, and other automotive product sales, new and/or rebuilt (with major repair limited to a fully enclosed building and storage of parts and vehicles screened from adjacent property by landscaping and fencing)	P	
	Vehicle and trailer sales and services (with major repair limited to a fully enclosed building)	P	
	Vehicle rentals	P	
	Vehicle service stations; if fuel is sold, then in accordance with section 24-38		SUP
	Veterinary hospitals (with all activities limited to a fully enclosed building with the exception of supervised animal exercise while on a leash)	P	
	Wholesale and warehousing (with storage limited to a fully enclosed building)	P	
Civic	Fire stations	P	
	Governmental offices	P	
	Libraries	P	
	Nonemergency medical transport		SUP
	Places of public assembly	P	
	Post offices	P	
	Schools		SUP
Utility Uses	Communications facilities (public or private) in compliance with article II, division 6 of this chapter.	P	
	Communications facilities (public or private) in compliance with article II, division 6 of this chapter.		SUP
	Electrical generation facilities (public or private), steam generation facilities, and electrical substations with a capacity of 5,000 kilovolt amperes or more and electrical transmission lines capable of transmitting 69 kilovolts or more		SUP

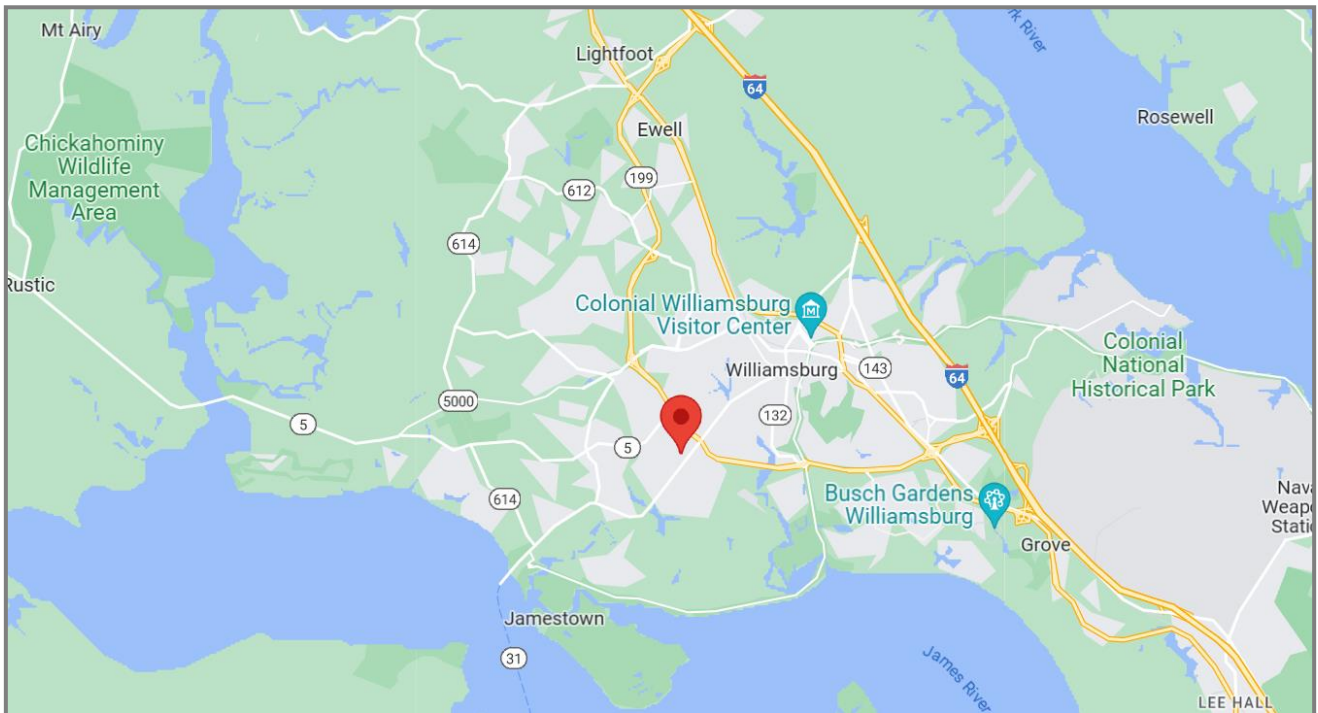
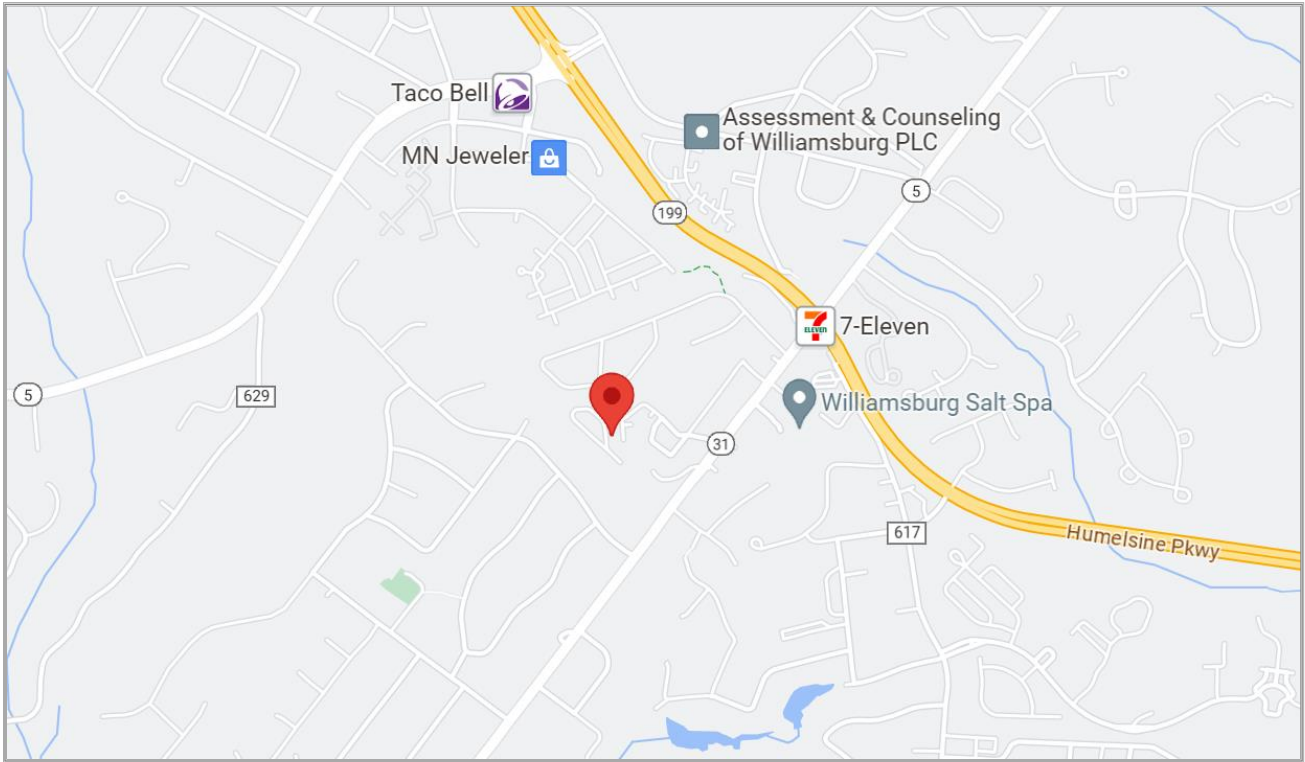
*This information was obtained from sources deemed to be reliable, but is not warranted.
This offer subject to errors and omissions, or withdrawal, without notice.*

Permitted Uses

Use Category	Use List	Permitted Uses	Specially Permitted Uses
	Railroad facilities including tracks, bridges and stations. Spur lines which are to serve and are accessory to existing or proposed development adjacent to existing railroad rights-of-way and track and safety improvements in existing railroad rights-of-way, are permitted generally and shall not require a special use permit		SUP
	Telephone exchanges and telephone switching stations	P	
	Transmission pipelines, public or private, including pumping stations and accessory storage, for natural gas, propane gas, petroleum products, chemicals, slurry coal and any other gases, liquids or solids. Extensions for private connections to existing pipelines, which are intended to serve an individual residential or commercial customer and which are accessory to existing or proposed development, are permitted generally and shall not require a special use permit		SUP
	Water facilities, public or private, and sewer facilities (public), including, but not limited to, treatment plants, pumping stations, storage facilities and transmission mains, wells and associated equipment such as pumps to be owned and operated by political jurisdictions. However, the following are permitted generally and shall not require a special use permit:		SUP
	(a) Private connections to existing mains that are intended to serve an individual customer and that are accessory to existing or proposed development, with no additional connections to be made to the line; and		
	(b) Distribution lines and local facilities within a development, including pump stations		
Open	Timbering, in accordance with section 24-43	P	
Industrial Uses	Processing, assembly and manufacture of light industrial products or components, with all storage, processing, assembly and manufacture conducted indoors or under cover, with no dust, noise, odor or other objectionable effect.		SUP
	Waste disposal facilities		SUP

*This information was obtained from sources deemed to be reliable, but is not warranted.
This offer subject to errors and omissions, or withdrawal, without notice.*

Maps



*This information was obtained from sources deemed to be reliable, but is not warranted.
This offer subject to errors and omissions, or withdrawal, without notice.*